

# ***BUFFALO VALLEY LUTHERAN PARISH NEWS***

## **SEPTEMBER 2025**

### **PASTOR'S PARAGRAPHS**

Grace and peace to you!

*"<sup>10</sup> Now he was teaching in one of the synagogues on the Sabbath. <sup>11</sup> And just then there appeared a woman with a spirit that had crippled her for eighteen years. She was bent over and was quite unable to stand up straight. <sup>12</sup> When Jesus saw her, he called her over and said, "Woman, you are set free from your ailment." <sup>13</sup> When he laid his hands on her, immediately she stood up straight and began praising God. <sup>14</sup> But the leader of the synagogue, indignant because Jesus had cured on the Sabbath, kept saying to the crowd, "There are six days on which work ought to be done; come on those days and be cured and not on the Sabbath day." <sup>15</sup> But the Lord answered him and said, "You hypocrites! Does not each of you on the Sabbath untie his ox or his donkey from the manger and lead it to water? <sup>16</sup> And ought not this woman, a daughter of Abraham whom Satan bound for eighteen long years, be set free from this bondage on the Sabbath day?" <sup>17</sup> When he said this, all his opponents were put to shame, and the entire crowd was rejoicing at all the wonderful things being done by him."—Luke 13:10-17*

When I was growing up, Sundays meant church, family, and food. My family would gather at St. Paul's Lutheran Church in Homer, Nebraska, for worship. My mother was armed with a wooden spoon to attempt to keep us kids quiet during the service. She was not afraid to take us outside and use it on us. Afterwards, we would head home for a lunch of fried chicken or roast beef with all the "fixins." There were many Sunday afternoons when we spent time visiting family. I'm guessing that your families had similar ways of spending Sundays, which often involved church, family, and food.

Many of us can recall a time when stores were closed on Sundays. Salespeople had a day off, and no business was transacted. All of these customs originated from people's interpretations of how to observe the Third Commandment: "Remember the Sabbath day, and keep it holy." From the time this commandment was given by God to Moses, there has been disagreement about why we should honor the Sabbath and how we keep it holy. The Sabbath was meant to be a gift, a time of rest and restoration, a time to worship God. But quickly that gift turned into Law, and all sorts of rules grew up about what was work and what wasn't, what was permissible to do on the Sabbath and what was not. Keeping the Sabbath holy also meant reserving that day for worship of God,

and, as you might guess, people had various ideas about what constituted worship and precisely what kept the Sabbath holy.

Jesus and his disciples frequently found themselves in trouble with the religious authorities for not observing the Sabbath as they were supposed to. The issue comes up four times in the Gospel of Luke, and three of these controversies involve healing on the Sabbath. Jesus is teaching in a synagogue on the Sabbath when he notices a woman who is so crippled that she is completely bent over. She has been suffering this way for 18 years. The woman does not approach Jesus, nor ask for anything. She doesn't have to. The minute Jesus sees her, he calls her over and says, "Woman, you are set free from your ailment," and he lays hands on her.

What Jesus does for the woman is set her free from the torture and imprisonment of her own body. Jesus gives her a new life, free from pain, free from shame, free from isolation. And she didn't have to do anything. What Jesus does for the woman is a gift, pure grace. When Jesus touches the woman, she stands up straight and tall for the first time in 18 years, and she begins to praise God.

So how do we keep the Sabbath holy today? How do we worship God in the 21<sup>st</sup> century?

The ways we used to keep the Sabbath are long gone. On Sundays, we work, we shop, we play sports or watch them on TV; we do everything that we do on any other day. With our busy schedules, we desire to spend time with our families, and our focus on having as much fun and free time as possible often leaves us struggling to honor the Sabbath and use the day to worship God.

What are our priorities?

I was going through some Synod information. There are 116 congregations in our Synod. What do you think the average attendance is for 116 congregations? Sadly, the average attendance is 33. By looking at that statistic, where are we prioritizing God?

So, what are our priorities? What are our priorities as individuals? As families? As communities?

Don't get me wrong. I am not saying that you need to give up on those other activities because I enjoy attending our parish youth events and other activities outside of the church. But what I am saying is, maybe we need to prioritize a little. Do our daily lives so consume us that we can't give an hour of our time every week for God? We pray to God for healing or to fix our problems. But we can't give God an hour a week for thanks and praise? What if we were to put God first in all that we say and do?

The fact that we come to worship suggests that we are seeking something more, that we are looking for ways to keep the Sabbath holy and to thank and praise God. So, we gather together to tell and to hear the story of God's love for us.

As always, I continue to lift you up in prayer! If you have any pastoral care needs, please let me know.

Peace in Christ,  
**Rev. Curt Wingert**

### **OCTOBER IS PASTOR APPRECIATION MONTH**

In October, church members get the chance to show their Pastors just how much they are loved and appreciated as it is Pastor Appreciation Month. The entire month of October becomes a time when congregational members can pause, deliberately take the time, and expend the effort, to let pastors know they are deeply appreciated.



We often don't take the time to thank our pastor for all he does, but we would like to take this time during October, the month of National Clergy Appreciation.

Next month (or any time), intentionally take the time and expend the effort to let Pastor Curt know he is deeply appreciated, not just in October, but all year through.

## ***PARISH EVENTS***

### **JOINT WORSHIP & PICNIC**



#### **The Service**

On **September 7**, the Parish will have a joint worship service at the Mifflinburg Community Park. The service will start at **10:00 a.m.**, with the picnic following the service, which will include the blessing of the backpacks.

#### **The Picnic**

Bring a covered dish to share. The Parish will provide hot dogs, drinks, and table service.

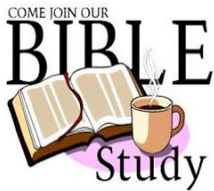
#### **Blessing of the Backpacks**

All school-age youth, please join us... All educators and staff please join us on Sunday, September 7 during the combined church service at the town park at 10 am. There will be a special blessing for school-aged kiddos, teachers, staff, etc., and a blessing of student's backpacks, teacher's bags, laptop bags, etc. After the blessings, everyone will receive a few special trinkets. Hope to see you there!



## Day of Service

In conjunction with our joint service in the park on September 7, we will join the congregations of the ELCA for “**God’s Work. Our Hands.**” **Sunday**, our annual day of service. As a part of our day of service, **we will be collecting items for Hope’s Haven**. The following items have been requested for Hope’s Haven: **Peanut Butter, Jelly, Pancake Mix, Pancake Syrup, Canned Tuna, Canned Soup, Canned Vegetables, Canned Fruit (no applesauce cups).**



## Bible Study

The Parish Bible Study will resume in September. They will continue to meet on Mondays at 1:30 pm at First Lutheran. They are continuing their study of I & II Corinthians. All are welcome.

Dates: **Sept. 1 – No study due to Labor Day**  
**Sept. 8, 15, 22, 29**

## Notes of Appreciation

- ❖ I pray you are doing well. I want to thank everyone who helped with the BINGO stand at the West End Fair this year! This year, the Parish raised \$2,031.70!! The funds that we raised will go into the Helping Hands fund to help those in need in our communities! ~ Blessings, Rev. Curt
- ❖ Thank you to Gail Zerbe for watering the geraniums.
- ❖ First Evangelical Lutheran Church,  
Thank you for accommodating the Mifflinburg Aquacats by providing a meeting space for our team fundraiser. We are particularly grateful to Libby Loss for coordinating the drop-off logistics. Thank you on behalf of the team.  
~ Jamie Bailey, Vice President



## ***SENIOR MEMBER DINNER***

*Inside every older person is a younger person wondering what the heck happened!*

If you were born in or prior to 1963, you, along with a guest, are invited to attend the annual Parish Senior Member Dinner on **Sunday, October 19, at 12:30 p.m.**

Reservations would be very helpful to us in planning the meal. Please reserve in order for the cooks to prepare enough food. Just fill out the attached form and return it to the church office or call the church office by **October 12**, to make a reservation.

Mark your calendars and plan to be present for an appetizing meal and pleasant fellowship.

-----

### **SENIOR MEMBER DINNER**

**October 19, 2025 ~ 12:30 p.m.**

Name \_\_\_\_\_

Telephone \_\_\_\_\_

Number of reservations \_\_\_\_\_

**(Return by October 12)**



## ***FELC NEWS***

### **Coffee Hour**

If you would like to see the monthly Coffee Hour return to FELC, we need someone to organize it. Please let the church office know if you are interested in assuming this task.



### **Music News**

September 7 - In the park - We are delighted that two students from Susquehanna University will lead the music. After the service, they will provide dinner music!

Starting up in the Fall, we will hear piano/organ, the choir, and tone chimes once during the month. They rehearse alternatively before or after church.

### **Food Donations**

The Mifflinburg Kiwanis Club provides food boxes each December to needy families within our school district. This past year 75 boxes were distributed. As you can imagine, it takes a tremendous amount of food to fill these boxes. In an attempt to fill these boxes, we are asking church members to help. Each month there will be a designated food item you can donate. A box is in the hallway for donations. Please be sure your item will not go out of date before February 2026. Thank you for helping to feed those in need. **For the month of September, we are collecting pancake mixes.**

### **Word in Season Devotionals**

The Word in Season devotionals for October - December 2025 will be available in the back of the sanctuary.

### **Altar Flowers**

The cost of altar flowers is now \$50 for 2 vases.

### **Empty Coffee Cans Needed**

We are in need of empty #1 coffee cans for altar flowers. You may place them on the pew in the office hallway.

### **Weis/Wenger's Gift Cards**

Gift cards are available in denominations of \$25, \$50, or \$100 and make wonderful gifts for any occasion. **Kim Sawyer is selling the cards.** The cards will be available on Sundays, before or after church; at her home; in the church office when the

secretary is in; and Kim will also deliver; contact her at 570-713-4577. Make checks payable to "First Lutheran Church" and use them as cash or the recipient can do the same. **YOU receive the card's full value, and Weis gives 5% and Wenger's 10% of purchase to our mission fund!** Many thanks to all who support this mission.



### **HARVEST HOME AT FIRST LUTHERAN**

First Lutheran will be celebrating Harvest Home on **Sunday, October 5**. As an act of giving thanks for the harvest, we will be sharing with those less fortunate by collecting food items for Hope's Haven. The following foods are needed:

Canned fruit (no applesauce cups), Canned tuna, Canned soup, Pancake mixes and Syrup, Peanut butter, Jelly

Food should be brought to the church and placed on the pew next to the pulpit door **no later than Friday, October 3 by noon**. The doors will be open on **Friday from 8:00 a.m to 12:00 p.m.**

### **Blanket Sunday – October 5 at FELC**



Brrr! When the weather outside is cold and deep with snow, we burrow under warm blankets every night to stay warm as we fall fast asleep. Now imagine a man on a cold bench or a family standing outside of their home, looking at the devastation caused by a natural disaster...How will they find warmth? For many, a simple blanket given when they most need it is a loving way to offer warmth, to offer hope. Around the world, disasters force people from their homes, sending them to shelters and refugee camps where a blanket can make a big difference.

On **Sunday, October 5**, we will receive a special offering (**monetary gifts only; no blankets, please**) for **Lutheran World Relief**. For every \$5.00 collected, Lutheran World Relief will purchase and distribute a blanket to people who suffer from war or natural disasters all around the world.

Special envelopes will be available for your gift, or you can use your regular envelope and mark "Blankets" on the designated gift line.



## FELC Mums for Harvest Home

Mums will decorate the church sanctuary on Sunday, October 5 for Harvest Home. They may be picked up after the Sunday worship service. If you would like to remember or honor a loved one, please complete the order form and return it to the church office, with payment, by **Sunday, September 14**. Colors available will be: orange, red, white, and golden yellow and the cost is \$8 each. If you have any questions, please contact Sue Jows.

-----



## Order Form for Mums

\$8.00 each

\_\_\_\_\_ Orange      \_\_\_\_\_ Red      \_\_\_\_\_ White      \_\_\_\_\_ Golden Yellow

In Honor of: \_\_\_\_\_

Remembered by: \_\_\_\_\_

In Memory of: \_\_\_\_\_

Remembered by: \_\_\_\_\_

Total plants ordered: \_\_\_\_\_

Total amount due: \$ \_\_\_\_\_

# LOOK What's Going On!

## ***CULC NEWS***

### **Apple Dumplings**

Plans are being made for an Apple Dumpling sale again this year. However, as of this printing nothing has been finalized yet. Watch for more information as it becomes available. If you have questions, talk to Teresa Shuck.

### **CULC Money Counters**

We are still in need of additional offering counters after worship services. If interested, contact Barry Spangler (570-966-0406).

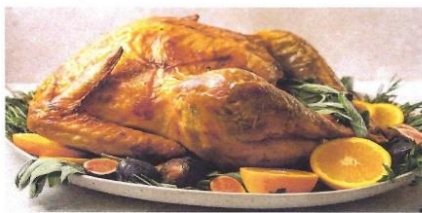
## **Drive Through Turkey Dinner**

**All Proceeds Benefit Hope's Haven Food Pantry**

**Saturday, Sept. 27, 2025**

**3:30 until sold out**

**Dinners include  
Turkey, Mashed Potatoes, Stuffing, Gravy,  
Vegetable and Applesauce**



**\$12**

**Pre Orders accepted at  
4bellschurch.com  
or  
call 570-716-5601**

**Christ's United Lutheran '4 Bells' Church**



**Located  
3 ½ miles West of Mifflinburg  
On Rt 45**



## ***HARVEST HOME AT CHRIST'S UNITED***

On **October 12** we are going to continue our long-standing tradition of a Harvest Home service, when we gather to give thanks for the bounty of the year's crops, for family & friends, and for God's many blessings.

On this special Sunday, the sanctuary will be decorated with glories of the season. If you can provide any of the following items to help us do that, please have them here by **9:00 a.m. on October 11.**

**Pumpkins – Gourds – Indian Corn – Corn Ears – Corn Stalks – Fresh Fruit – Fresh Vegetables – Fall Leaves – Fresh or Dried Flowers – Home Canned Items – Crates – Baskets**

Be sure to have your name on all items so they can be returned to you. Also, if you would be available to lend a hand with decorating, your help would be exceedingly welcomed.



A collection of non-perishable food and monetary donations for Hope's Haven, to help those in need, will be received at this service. We have all been truly blessed and we ask that you share your blessings with those who are less fortunate by bringing a monetary donation and/or non-perishable food items along to worship on the 12th. We will collect the donations during worship. Specific items requested include: **pancake mix, pancake syrup, canned tuna, canned fruit (no applesauce cups), canned vegetables, peanut butter & jelly.**

We invite you to join us for this Celebration of Thanks-giving as we give thanks for the blessings, gifts, and the harvest we have received this year from God. Contact Teresa Shuck (570-966-2053) if you want more information.



### **Blanket Sunday At CULC – October 12**

Also on **Sunday, October 12**, we will receive a special offering for **Lutheran World Relief**. For every \$5.00 collected, Lutheran World Relief will purchase and distribute a blanket to people who suffer from war or natural disasters all around the world.

Special envelopes will be available for your gift or you can use your regular envelope and mark “Blankets” on the designated gift line. Your donation will make a positive impact upon a person in America and around the world.

Donations of new and like-new blankets measuring approximately 60” X 80” for LWR are also welcome (no electric blankets or afghans, please).

Blankets are a gift of love that keeps on giving. Your blanket or donation can deliver that same message — of God’s ever-present love and care — to someone in need.



***CULC CHRYSANTHEMUM ORDERS***

The glorious hues of autumn chrysanthemums will be adorning the sanctuary for our celebration of Harvest Home on **October 12**. If you would like to provide one or more of these colorful plants, please fill out the following and return it to Margie or Janice Wagner.

-----

**CHRYSANTHEMUM ORDER FORM**  
**Cost: \$8.00      Order Deadline: September 28**  
**Return with payment to Margie Dunkle or Janice Wagner**

GIVEN BY \_\_\_\_\_

in memory of \_\_\_\_\_

in memory of \_\_\_\_\_

in honor of \_\_\_\_\_

in honor of \_\_\_\_\_

to the Glory of God \_\_\_\_\_

NUMBER OF PLANTS ORDERED \_\_\_\_\_

AMOUNT ENCLOSED \_\_\_\_\_



## ***UPCOMING MEALS***

### **Free Community Meal at FIRST**

First Lutheran will be serving a free community meal on **Saturday, September 6, from 11:00 – 12:30**. All are welcome! Please enter the door in the alley behind the church. Meals for the remainder of the year will be held on **October 4, November 1, and December 6**.

### **'Drive Through' Turkey Dinner at Christ's United**

A 'Drive Through' Turkey Dinner is planned for September 27<sup>th</sup> at Christ's United. All proceeds benefit 'Hope's Haven' Food Pantry. The time is 3:30 pm until sold out. Advance Orders will also be taken. Please check our website at [www.4bellschurch.com](http://www.4bellschurch.com).

Dinners include Turkey, Mashed Potatoes, Stuffing, Gravy, Vegetable and Applesauce.

A work day will take place on Friday, Sept. 26<sup>th</sup> starting at 9 am. Turkeys need cleaned, Bread needs cut for stuffing, and applesauce needs mixed & put into containers. Please let us know if you can help.

Help is also needed on Saturday, September 27<sup>th</sup>, the day of the Dinner, beginning at 9:00 am. Help will be needed as the day goes on for other duties including making up the dinners, taking them to the cars, as well as cleaning up.

If you are experienced, that is great; if not, we will provide training! If you have questions, or to volunteer to help, please call Kim Blyler at 570-716-5601 or email [kim@4bellschurch.com](mailto:kim@4bellschurch.com).

### **"Drive Through" Pot Pie Sale – November 1**

Information will soon be forthcoming.

# IN OUR *Thoughts and Prayers*

## **CHRIST'S UNITED**

Jim Adams  
Randy & Gayle Baker  
Paul Brann  
Roger Dunkle  
Rick & Darlene Endy  
Dorothy Furgison  
Gary Gemberling  
Pearl Gemberling  
Gary & Janet Hackenberg  
Keith Hackenberg  
Paul & Sherri Klauger  
Nancy Klinepeter  
Roy Laudermilch  
Tonia Longer  
Kay Martin  
Steve & Judy Moyer  
Melinda Noll  
Dave Oberlin  
Kevin & Ashley Reber  
Larry Sampsell  
Lucas Sanfoard  
Lee & Kathy Spangler  
Chuck Spurr  
Dave & Linda Swartz  
Kerm & Joyce Wagner  
Gary & Marline Walters  
Tom Watters  
Donald Weller  
Alica Zimmerman

## **The Shut-Ins:**

Betty Goss, Helen Pirone, Dottie Rathfon, Louise Ritter, Sam Schnure

*In an effort to keep the prayer list current, Christ's United will clear their current list on a quarterly basis. A new list will begin in January, April, July, and October. If you want to continue an existing prayer request or have a new prayer concern, please contact Margie.*

## **FIRST LUTHERAN**

John Schnure  
Jim Schwartz  
Max Zeller

## **Shut Ins:**

Millard Boyer  
Mary "Lib" Dunkle  
Lois Elliott  
Doris Moll  
Ethel Musser  
June Ocker  
Barb Reed  
Dotty Seebold  
James Shipton  
Pat Smith  
Nancy Ulrich

## **The Troops**

Thaddeus Miller – deployed overseas for 6 months  
Zachary Miller





### **CULC**

9/14 Sandy Sanders  
Karen Zimmerman  
9/15 Gayle Zerbe  
9/19 Forrest Showalter  
9/20 Molly Keister  
9/21 Terry Kline  
9/22 Jacob Moyer  
9/26 Eugene Hassinger  
Jason Zimmerman

### **FELC**

9/2 Vicki Hackenburg  
Brynn Umholtz  
9/3 Elliana Girton  
9/4 Daphine Fritz  
9/6 Stephen Smith  
9/9 Amanda Galer  
Craig Rothermel  
9/12 Blaine Dunkle  
Jayla Yoder  
9/13 Mary Jane Feaster **(90)**  
9/14 John Uehling  
9/15 Jace Watson  
9/16 Jadyn Rothermel  
9/17 Grace Crossland  
9/19 Curt Rothermel  
9/24 Nathan Lynch  
Ella Montesinos  
9/25 Millard Boyer  
9/26 William Baylor  
Tracy Mensch  
Tom Woodring  
Max Zeller  
9/28 Ruth Gessner  
Linda Lewis  
Andrew Schwartz  
9/30 Brenda Ilgen  
Maxine Stahl



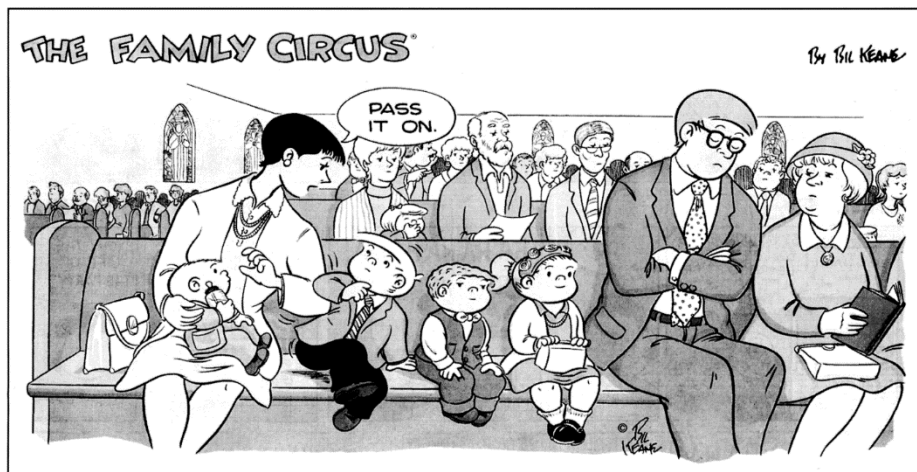
# Happy Anniversary

## CULC

9/6 Cliff & Diane Valentine (1969)  
9/9 Tom & Evelyn Rice (1972)  
9/16 Kris & Carla Ruhl (1978)  
9/18 Zachary & Abigail Harvey (2004)  
9/25 Joe & Sherry Zimmerman (1976)  
9/28 D.J. & Haleigh Boop (2019)  
9/29 Ken & Patty Emery (1973)

## FELC

9/6 Jed & Liz Loss (17 yrs.)  
9/25 Christian & Bethany Boyer (4 yrs.)  
9/26 Jeff & Vicki Hackenburg (27 yrs.)  
9/30 Jason & Daphne Fritz (25 yrs.)  
Eric & Gwen Hull (30 yrs.)  
Max & Trena Zeller (36 yrs.)



from The Joyful Noiseletter Reprinted with permission of Bil Keane ©Bil Keane



## VOLUNTEERS

### **CULC**

<b>Date:</b>	<b>Greeters:</b>	<b>Lay Reader:</b>	<b>Communion Assistants:</b>
<b>9/07</b>	<b>Worship @ Mifflinburg Park</b>		
9/14		Barry Spangler	Barry Spangler
9/21		Lee Spangler	Judy Moyer
9/28		Greg Shuck	Greg Shuck

**Sound System:** Dianne Shuck

**Altar Guild:** June Wenrich

**Ushers:** Greg Shuck/Linda Smith

**REMINDER!** You are responsible for finding a substitute if you are unable to be here when scheduled. Altar Guild Members, Sound System Operators & Ushers are responsible for any special services scheduled during the month.

---

### **FELC**

<b>Date:</b>	<b>Lay Reader:</b>	<b>Ushers:</b>	<b>Acolytes:</b>
9/07	-----	<b>Service at Mifflinburg Park</b>	-----
9/14	<b>Service at UCC</b>	-----	-----
9/21	Don Seebold II	Jeff Hackenburg/Dewey Reed	Jane Moore
9/28	Karen Boyer	Christian Boyer/Harry Boyer	Erica Boyer

**Chief Usher:** Jamie Bartlett

**Money Counters:** Shirley Heasley/Kim Sauers

**Altar Guild:** Linda Lewis/Jane Moore

**Volunteers, Please Note:** If you are scheduled to help with the service and are unable to fulfill your responsibility, please contact the head usher.

If you are scheduled to count money and are unable to do so, please find a substitute.

# **BUFFALO VALLEY LUTHERAN PARISH**

**The Rev Curt Wingert, Pastor**

**Pastor Curt's e-mail:** [pastorbuffalovalleyparish@gmail.com](mailto:pastorbuffalovalleyparish@gmail.com)

**Parish Council Members:** Terry Kline, Marianne Motto, Barb Randecker,  
Kim Sauers, Teresa Shuck, Linda Smith

**CHRIST'S UNITED LUTHERAN CHURCH**  
13765 Old Turnpike Rd., Millmont, PA  
17845  
570-922-1860

**CULC e-mail:** [culc@4bellschurch.com](mailto:culc@4bellschurch.com)  
**CULC Website:** [www.4bellschurch.com](http://www.4bellschurch.com)  
**CULC Facebook:**  
<https://www.facebook.com/4bellchurch1>

## **OFFICE HOURS:**

Monday-Thursday – 9:00 a.m.-2:30 p.m.

## **STAFF MEMBERS**

**The Members of the Congregation,**

*The Ministers*

**Matthew Wagner**, Organist

**Diane Valentine & Karen**

*Zimmerman*, Pianists

**David Swartz & Barry Spangler**,

*Digital Music Arrangers*

**Loretta Martin**, Custodian

**Margie Dunkle**, Secretary/Asst. Tr.

**Brandi Zimmerman**, Council Secretary

**Dianne Shuck**, Treasurer,

*Financial Recording Secretary*

## **COUNCIL MEMBERS**

**Joel Blyler - Dennis Boop**

**Gina Buttorff - Bev Catherman**

**Terry Kline - Lisa Lapp**

**Greg Shuck - Teresa Shuck**

**Linda Smith - Lee Spangler**

**Breonna Zimmerman - Idella Zimmerman**

**FIRST EVANGELICAL LUTHERAN CHURCH**  
404 Market St., Mifflinburg, PA 17844  
570-966-0266

## **FELC e-mail:**

[felcmifflinburg@gmail.com](mailto:felcmifflinburg@gmail.com)

**FELC Website:** [felcmifflinburg.org](http://felcmifflinburg.org)

**FELC Facebook:** First Evangelical  
Lutheran Church Mifflinburg Pa

## **OFFICE HOURS:**

Monday, Tuesday, Thursday –  
9:00 a.m. - 2:00 p.m.

## **STAFF MEMBERS**

**Sue Nentwig**, Church Secretary

**Katiann Lloyd**, Financial Secretary

**Gloria Mincemoyer**, Treasurer

**Diane Scott**, Director of Music

**Hank Dorman**, Sexton

**Kay Trick**, Housekeeping

## **COUNCIL MEMBERS**

**Jamie Bartlett - Christian Boyer**

**Drew Christy - Perri Hull**

**Linda Lewis - Jeff Mensch**

**Barb Randecker - Kim Sauers -**

**Don Seebold II**





355 Mt. Luther Lane, Mifflinburg, PA 17844  
(570) 922-1587 Fax (570) 922-1118

### **Youth Game Night**

The synod's Youth Ministry Initiative, led by youth from **around the** synod, kicks off the new school year with monthly events. The first event will be a game night at Christ's Lutheran Church, Lewisburg, on **Sunday, September 24 from 2-4 p.m.** You are invited to bring your own game and enjoy some fellowship and refreshments.

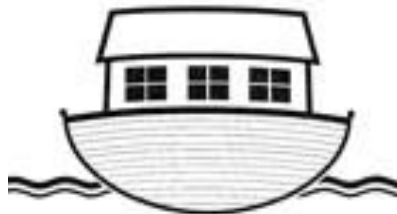
Other events scheduled for fall include:

Oct. 12 - Murder Mystery, 2-4 p.m. at St. John's Lutheran, Northumberland

Nov. 9 - A Ping Pong Tournament (2-4 p.m., place TBA)

Dec. 7- Advent Worship and Fellowship, 2-4 p.m. at Camp Mount Luther

Camp Mount Luther year-round staff are part of this program. Come out and have some fun with us.



## ***SYNOD NEWS***

### **Sacred Steps, A Discernment Event**

Feel as though God is calling you into something more? Join us for a day of discernment to discover where God might be leading you to live deeper into the Good News of Christ Jesus for the sake of the church and the world.

**Sacred Steps, a discernment event**, will take place on October 11, 2025, from 8:30 a.m. to 4:00 p.m. at Camp Mount Luther. The day will include a keynote from Rev. Martin Otto Zimmann of United Lutheran Seminary as well as discernment activities, break out time, and a discernment panel. The cost is \$25 and includes lunch and a book. Pre-register by contacting the Synod Office at (570) 524-9778 by 9/26/25.

## **“Navigating the Challenging World of Dementia and Abuse Prevention”**

Messiah, New Berlin, invites you to a presentation on October 9th at 7:00 pm. by Lynn Fiedler and Kim Rigel, founders of the nonprofit *Journey to Justice*. The presentation, “Navigating the Challenging World of Dementia and Abuse Prevention” is for anyone seeking further understanding of the dementia disease process and the challenges it presents. Resources will be available to help navigate the uncertain pathway as the disease unfolds including steps to follow, questions to ask, and available resources to enlist will all be discussed. Light refreshments will be served.

~~~~~

### **YOUR CHURCH IS YOU**



*“You are a walking advertisement of your church and the Christ whom it proclaims. You take the church out of its four walls, and make it live in the everyday affairs of life. In fact, what people think of your church, they think of you.”*

*“Some have the idea that the pastor is the church. It is true that the pastor often speaks for the church, declares what it stands for, and invites people into its fellowship. It is the pastor’s job to know the church’s life and to act on its behalf. The pastor is your representative, but certainly not your substitute.”*

*“The preaching in the pulpit is fruitless unless it is reflected in the lives of members of the congregation. Christian education is ineffective unless it comes to life in the attitude and behavior of people. Your church is measured not so much by what its leaders say as by what you do. You are the means by which the good life advocated by the church is communicated to people.”*

*“Your church professes a concern for people; you express that concern in the way you act toward others. Your church tries to build up a Christian world; you validate these attempts by your community. Your church claims to have a gospel that will make people new, opening them to a fuller life; you are the demonstration of that claim.”*

*“Your daily acts as a Christian preach more sermons, teach more people, and save more lives than the words that are spoken inside the four walls of your church building. You are a cell of the living church. Without you, the church has no life.”*

# September 2025

| Sunday                                                                                                                 | Monday                                                                       | Tuesday   | Wednesday                            | Thursday                        | Friday                                | Saturday                                                                   |
|------------------------------------------------------------------------------------------------------------------------|------------------------------------------------------------------------------|-----------|--------------------------------------|---------------------------------|---------------------------------------|----------------------------------------------------------------------------|
|                                                                                                                        | <b>1 Labor Day</b><br><br><b>No Bible Study</b><br><br><b>Offices Closed</b> | <b>2</b>  | <b>3</b><br>10:00 Hope's Haven-CULC  | <b>4</b><br><br>1:00 WELCA-FELC | <b>5</b>                              | <b>6</b><br>10:00 Laurelton Center Reunion-CULC<br>11-12:30 Community Meal |
| <b>7 God's Work, Our Hands</b><br><b>No Adult SS-FELC</b><br>10:00 Joint Worship/Picnic-Mifflinburg Park               | <b>8</b><br><br>1:30 Parish Bible Study-FELC                                 | <b>9</b>  | <b>10</b><br><br>6:30 Council-FELC   | <b>11</b>                       | <b>12</b>                             | <b>13</b><br><br>TBA MHS Class of '61 Banquet-CULC                         |
| <b>14</b><br>8:30 Worship-CULC<br>9:00 Adult SS-FELC<br>9:45 Chimes-FELC<br>10:30 Worship with UCC                     | <b>15</b><br><br>1:30 Parish Bible Study-FELC                                | <b>16</b> | <b>17</b><br>10:00 Hope's Haven-CULC | <b>18</b>                       | <b>19</b>                             | <b>20</b><br><br><b>October Newsletter Articles Due</b>                    |
| <b>21</b><br>8:30 Worship-CULC<br>9:00 Adult SS-FELC<br>9:45 Chimes-FELC<br>10:30 Worship-FELC<br>Choir Rehearsal-FELC | <b>22</b><br><br>1:30 Parish Bible Study-FELC                                | <b>23</b> | <b>24</b>                            | <b>25</b>                       | <b>26</b><br>9:00 Supper Workday-CULC | <b>27</b><br>9:00 Supper Workday-CULC<br><br>3:30 Turkey Supper-CULC       |
| <b>28</b><br>8:30 Worship-CULC<br>9:00 Adult S-FELC<br>9:45 Choir Rehearsal-FELC<br>10:30 Worship-FELC<br>Chimes-FELC  | <b>29</b><br><br>1:30 Parish Bible Study-FELC                                | <b>30</b> |                                      |                                 |                                       |                                                                            |